



# Bullet Network Camera IP8332/32-C



1MP • Day & Night •  
Weather-proof

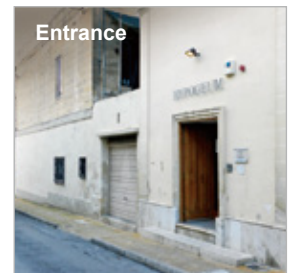
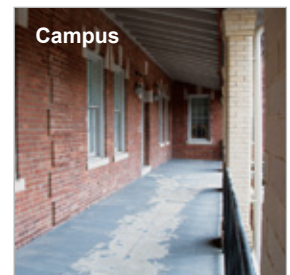
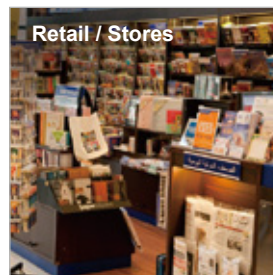
VIVOTEK IP8332 is a best-in-class, bullet-style network camera designed for diverse outdoor applications. Equipped with a 1MP sensor enabling viewing resolution of 1280x800 at a smooth 30 fps, the IP8332 is an all-in-one outdoor camera capable of capturing high quality and high resolution video.

In order to adapt to constantly changing outdoor lighting conditions, the IP8332 features a removable IR-cut filter as well as IR illuminators effective up to 15M for superior image quality around the clock. For protection against harsh outdoor environments, the camera is encased in an IP66-rated housing and weather-proof casing to withstand rain and dust. The IP8332-C further strengthens the robustness of the camera by protecting the cable within the bracket.

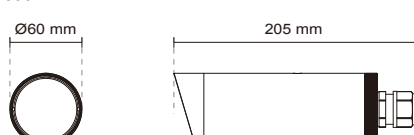
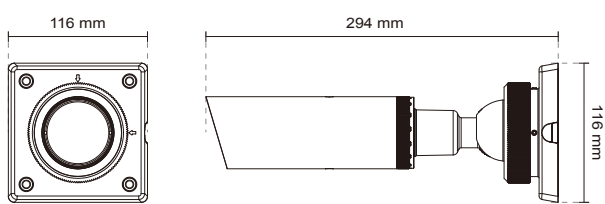
Incorporating a number of advanced features standard for VIVOTEK cameras, including tamper detection, 802.3af compliant PoE, MicroSD/SDHC card slot, and VIVOTEK's 32-channel recording software, the IP8332 is the ideal solution for your outdoor surveillance needs.

## Features

- 1-Megapixel CMOS Sensor
- Removable IR-cut Filter for Day and Night Function
- Built-in IR Illuminators, Effective up to 15 Meters
- Real-time H.264, MPEG-4 and MJPEG Compression (Triple Codec)
- Weather-proof IP66-rated Housing
- Built-in 802.3af Compliant PoE
- Built-in MicroSD/SDHC Card Slot for On-board Storage
- Mounting Bracket with Cable Management for Protected Installation (IP8332-C)



## Technical Specifications

Models	IP8332 IP8332-C	<b>Alarm and Event</b>	
<b>System Information</b>		Alarm Triggers	Video motion detection, manual trigger, digital input, periodical trigger, system boot, recording notification, camera tampering detection
CPU	Multimedia SoC (System-on-Chip)	Alarm Events	Event notification using digital output, HTTP, SMTP, FTP and NAS server File upload via HTTP, SMTP, FTP and NAS server
Flash	128 MB	<b>General</b>	
RAM	256 MB	Connectors	RJ-45 for Network/PoE connection DC 12V power input AC 24V power input Digital input*1
<b>Camera Features</b>		LED Indicator	System power and status indicator
Image Sensor	1/4" Progressive CMOS	Power Input	24V AC 12V DC IEEE 802.3af PoE Class 2
Maximum Resolution	1280x800	Power Consumption	Max. 4.0 W
Lens Type	Fixed-focal	Dimensions	Ø: 60 mm x 170 mm (IP8332) Ø: 60 mm x 294 mm (IP8332-C)
Focal Length	f = 3.6 mm	Weight	Net: 702 g (IP8332) Net: 1,282 g (IP8332-C)
Aperture	F1.8	Safety Certifications	CE, LVD, FCC Class A, VCCI, C-Tick
Field of View	56° (horizontal) 41° (vertical) 71° (diagonal)	Operating Temperature	-20°C ~ 50°C (-4°F ~ 122°F)
Shutter Time	1/5 sec. to 1/25,000 sec.	Warranty	24 months
Minimum Illumination	0.3 Lux, 50 IRE (Color) 0.001 Lux, 50 IRE (B/W)	<b>System Requirements</b>	
Pan/tilt/zoom Functionalities	ePTZ: 16x digital zoom (4x on IE plug-in, 4x built-in)	Operating System	Microsoft Windows 7/Vista/XP/2000
IR Illuminators	Built-in IR illuminators, effective up to 15 meters IR LED*12	Web Browser	Mozilla Firefox 7~10 (streaming only) Internet Explorer 7.x or 8.x
On-board Storage	MicroSD/SDHC card slot	Other Players	VL: 1.1.11 or above QuickTime: 7 or above
<b>Video</b>		<b>Included Accessories</b>	
Compression	H.264, MJPEG & MPEG-4	CD	User's manual, quick installation guide, Installation Wizard 2, ST7501 32-channel recording software
Maximum Frame Rate	H.264: 30 fps at 1280x800 MPEG-4: 30 fps at 1280x800 MJPEG: 30 fps at 1280x800	Others	Quick installation guide, warranty card, alignment sticker, waterproof connector, desiccant bag, RJ45 coupler, software CD Camera stand (IP8332) Cable management bracket (IP8332-C)
Maximum Streams	4 simultaneous streams	<b>Dimensions</b>	
S/N Ratio	Above 50 dB	<p>• IP8332</p> 	
Video Streaming	Adjustable resolution, quality and bitrate Configurable video cropping for bandwidth saving	<p>• IP8332-C</p> 	
Image Settings	Adjustable image size, quality and bitrate Time stamp, text overlay, flip & mirror Configurable brightness, contrast, saturation, sharpness, white balance, exposure control, gain, backlight compensation, privacy masks Scheduled profile settings		
<b>Network</b>			
Users	Live viewing for up to 10 clients		
Protocols	IPv4, IPv6, TCP/IP, HTTP, HTTPS, UPnP, RTSP/RTP/RTCP, IGMP, SMTP, FTP, DHCP, NTP, DNS, DDNS, PPPoE, CoS, QoS, SNMP, 802.1X		
Interface	10Base-T/100 BaseTX Ethernet (RJ-45)		
ONVIF	Ver. 1.02		
<b>Intelligent Video</b>			
Video Motion Detection	Triple-window video motion detection		

## Compatible Accessories

### Power Adapter



**AA-221**  
DC 12V Power Adapter

### PoE Kits



**MS-POE-IJAF**  
PoE injector, 802.3af compliant

All specifications are subject to change without notice. Copyright © 2012 VIVOTEK INC. All rights reserved.

Distributed by:



**VIVOTEK INC.**  
6F, No.192, Lien-Cheng Rd., Chung-Ho, New Taipei City, 235, Taiwan, R.O.C.  
|T: +886-2-82455282 | F: +886-2-8245532 | E: sales@vivotek.com

**VIVOTEK USA, INC.**  
2050 Ringwood Avenue, San Jose, CA 95131  
|T: 408-773-8886 | F: 408-773-8298 | E: salesusa@vivotek.com

Ver 1.0